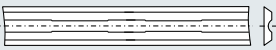


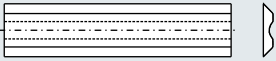

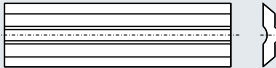
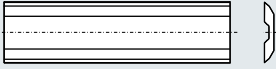
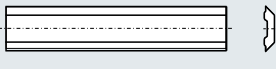
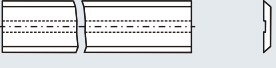


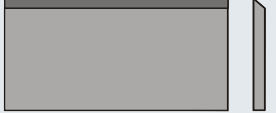




- EN Planer knives
- DE Hobelmesser
- FR Couteaux à raboter
- IT Coltelli da pialla
- ES Cuchillas para cepillar

- EN Planer knives
- DE Hobelmesser
- FR Couteaux à raboter
- IT Coltelli da pialla
- ES Cuchillas para cepillar

	<p>EN Reversible knives for portable planers            DE Wendeschneidplatten für Handhobel            FR Plaquettes pour rabots électro portatifs            IT Coltelli per piallatrici portatili            ES Cuchillas para acepilladoras electricas</p>	<b>118</b>
	<p>EN Planer knives for system Tersa            DE Hobelmesser für System Tersa            FR Couteaux à raboter pour système Tersa            IT Coltelli da pialla per sistema Tersa            ES Cuchillas para cepillar para sistema Tersa</p>	<b>119 - 120</b>
	<p>EN Planer knives for system Centrolock            DE Hobelmesser für System Centrolock            FR Couteaux à raboter pour système Centrolock            IT Coltelli da pialla per sistema Centrolock            ES Cuchillas para cepillar para sistema Centrolock</p>	<b>121</b>
	<p>EN Planer knives for system Terminus            DE Hobelmesser für System Terminus            FR Couteaux à raboter pour système Terminus            IT Coltelli da pialla per sistema Terminus            ES Cuchillas para cepillar para sistema Terminus</p>	<b>122</b>
	<p>EN Planer knives for system Centrofix / Centrostar / Quickfix            DE Hobelmesser für System Centrofix / Centrostar / Quickfix            FR Couteaux à raboter pour système Centrofix / Centrostar / Quickfix            IT Coltelli da pialla per sistema Centrofix / Centrostar / Quickfix            ES Cuchillas para cepillar para sistema Centrofix / Centrostar / Quickfix</p>	<b>123</b>
	<p>EN Planer knives for system Variplan            DE Hobelmesser für System Variplan            FR Couteaux à raboter pour système Variplan            IT Coltelli da pialla per sistema Variplan            ES Cuchillas para cepillar para sistema Variplan</p>	<b>124</b>
	<p>EN Planer knives for system Sinus            DE Hobelmesser für System Sinus            FR Couteaux à raboter pour système Sinus            IT Coltelli da pialla per sistema Sinus            ES Cuchillas para cepillar para Sinus</p>	<b>125</b>
	<p>EN Planer knives for system Enshin            DE Hobelmesser für System Enshin            FR Couteaux à raboter pour système Enshin            IT Coltelli da pialla per sistema Enshin            ES Cuchillas para cepillar para sistema Enshin</p>	<b>126</b>
	<p>EN Planer knives for system Bulldozer            DE Hobelmesser für System Bulldozer            FR Couteaux à raboter pour système Bulldozer            IT Coltelli da pialla per sistema Bulldozer            ES Cuchillas para cepillar para sistema Bulldozer</p>	<b>127</b>
	<p>EN Planer knives for system Barke / Brück / ESTA            DE Hobelmesser für System Barke / Brück / ESTA            FR Couteaux à raboter pour système Barke / Brück / ESTA            IT Coltelli da pialla per sistema Barke / Brück / ESTA            ES Cuchillas para cepillar para sistema Barke / Brück / ESTA</p>	<b>128</b>
	<p>EN HSS / Matrix planer knives            DE HSS / Matrix-Hobelmesser            FR Fers de raboteuse HSS / Matrix            IT Coltelli da pialla HSS / Matrix            ES Cuchillas en HSS / Matrix</p>	<b>129 - 131</b>
	<p>EN T.C.T. and solid carbide planer knives            DE HM-bestückte und Vollhartmetall-Hobelmesser            FR Couteaux à mise rapportée carbure et couteaux à raboter au carbure massif            IT Coltelli da pialla con metallo duro riportato e coltelli da pialla in HM integrale            ES Cuchillas con metal duro y cuchillas metal duro integral</p>	<b>132 - 133</b>

- EN Planer knives - Grades and their applications  
 DE Hobelmesser - Sorten und ihre Anwendungen  
 FR Couteaux à raboter - Les nuances et leurs applications  
 IT Coltelli da piassa - I tipi e le loro applicazioni  
 ES Cuchillas para cepillar - Calidades y sus aplicaciones

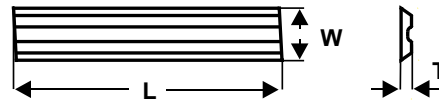
EN DE FR IT ES	TIGRA grade TIGRA - Sorte Nuance TIGRA Tipo TIGRA Calidad TIGRA	Compositon Zusammensetzung Composition Composizione Composición	Hardness Härte Dureté Durezza Durezza	Toughness Zähigkeit Ténacité Tenacità Tenacidad	Bending strength Biegebruchfestigkeit Résistance à la flexion Resistenza flessionale Resistencia a la flexión
	<b>HSS</b>	<b>6% W / M2</b>			
	<b>HSS 18%</b>	<b>18% W / T1</b>			
	<b>HSS M42</b>	<b>M42</b>			
	<b>High Performance Steel</b>	<b>CrV</b>			
	<b>T.C.T.</b>	<b>carbide tipped</b>			
	<b>Solid carbide</b>	<b>T10MG</b>			
		<b>T12SMG</b>			
	<b>Matrix</b>	<b>special coating</b>			

EN For technical data, please refer to the pages 8-10.  
 DE Die technischen Daten entnehmen Sie bitte den Seiten 8-10.  
 FR Pour les données techniques, veuillez voir aux pages 8-10.



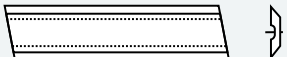
EN	HDF	MDF	Chipboard	Hardwood	Softwood	Main usage
DE	HDF	MDF	Spanplatte	Hartholz	Weichholz	Hauptverwendung
FR	HDF	MDF	Panneaux de particule	Bois dur	Bois tendre	Usage principal
IT	HDF	MDF	Truciolare	Legno duro	Legno tenero	Usò principale
ES	HDF	MDF	Panel de aglomerado	Madera dura	Madera blanda	Usò principal
	☐	☐	☐	✓	✓	EN Standard HSS grade, wood DE Standard-HSS-Sorte, Holz FR Nuance HSS standard, bois IT HSS standard, legno ES Calidad HSS estándar, madera
	☐	☐	○	✓	✓	EN Best HSS grade, wood DE Beste HSS-Sorte, Holz FR Meilleure nuance HSS, bois IT Migliore HSS, legno ES Mejor calidad HSS, madera
	☐	☐	☐	✓	✓	EN Special HSS grade, wood DE Spezial-HSS-Sorte, Holz FR Nuance HSS spéciale, bois IT HSS speciale, legno ES Calidad HSS especial, madera
	☐	☐	☐	○	✓	EN Softwood, low price demands DE Weichholz, preisgünstig FR Bois tendre, pris bas IT Legni teneri, costo basso ES Madera blanda, bajo costo
	○	✓	✓	✓	○	EN High lifetime demands DE Hohe Standzeitanforderungen FR Applications de durabilité maximisé IT Elevata esigenza di durata ES Para aplicaciones de maxima durabilidad
	✓	✓	✓	✓	✓	EN Highest lifetime demands DE Höchste Standzeitanforderungen FR Très longue durée de vie et nombreux services IT Massima esigenza di durata ES Vida útil muy prolongada
	✓	✓	✓	✓	✓	EN Highest lifetime and surface quality DE Höchste Lebensdauer und Oberflächenqualität FR La plus haute qualité de vie et de surface IT Maggiore durata e qualità della superficie ES Máxima vida útil y calidad de la superficie
	☐	☐	☐	✓	✓	EN Very long lifetime with multiple resharpening DE Sehr lange Lebensdauer durch mehrfaches Nachschärfen FR Très longue durée de vie et nombreux services IT Durata molto lunga con affilatura multipla ES Muy larga vida útil con múltiple reafilado

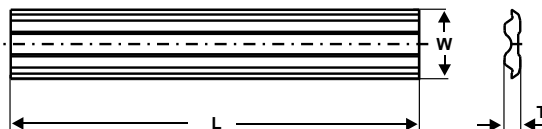
- ✓ best performance
- ✓ very good performance
- acceptable
- ☐ not suitable

IT Per i dati tecnici, fare riferimento alle pagine 8-10.  
ES Para los datos técnicos, consulte las páginas 8-10.



- EN Reversible knives for portable planers  
 DE Wendeschneidplatten für Handhobel  
 FR Plaquettes pour rabots électro portatifs  
 IT Coltelli per piallatrici portatili  
 ES Cuchillas para acepilladoras electricas

	L mm	W mm	T mm	T08MF	
	56.0	5.5	1.1	013041	Adler
	60.0	5.5	1.1	013053	Wegoma
	75.5	5.5	1.1	013001	AEG, Bosch, Festo, Haffner, Kress, Mafell, Metabo, Scheer, Skil, Holz-Her
	78.0	5.5	1.1	013067	Virutex
	102.0	5.5	1.1	013061	AEG
	80.5	5.5	1.1	013010	ELU
	80.5	5.9	1.2	013043	ELU
	82.0	5.5	1.1	013020	AEG, B&D, Bosch, ALU, Fein, Felisatti, Haffner, Hitachi, Holz-Her, Mafell, Makita, Metabo, Peugeot, Ryobi, Skil
	82.0	5.1	1.2	013034	Face groove, Brustnut, Rainure sur grande face, Scanalatura frontale, Ranura frontal



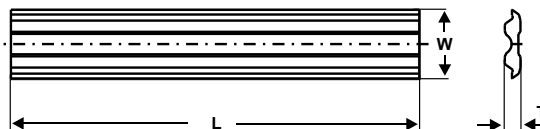
For System Tersa\*

- EN System Planer knives
- DE Systemhobelmesser
- FR Couteaux à raboter pour système
- IT Coltelli da pialla per sistema
- ES Cuchillas para cepillar para sistema

L mm	W mm	T mm	T10MG	HSS Standard (M2)	HSS 18% (T1)	HSS M42	High Performance Steel
60.0	10.0	2.3	100847	100395	114482	114539	108320
75.0	10.0	2.3	104212	107545	114483	114540	115104
80.0	10.0	2.3	100848	100396	114484	114541	115105
90.0	10.0	2.3	104398	107546	114485	114542	115106
95.0	10.0	2.3	104211	107547	114486	114543	115107
100.0	10.0	2.3	055509	100397	114487	114544	108321
110.0	10.0	2.3	100849	100398	114488	114545	108322
115.0	10.0	2.3	105071	104630	114489	114546	108323
120.0	10.0	2.3	100851	100399	114490	114547	108324
125.0	10.0	2.3	104022	107548	114491	114548	115108
130.0	10.0	2.3	055510	100400	114492	114549	108325
135.0	10.0	2.3	103823	103821	114493	114550	108326
140.0	10.0	2.3	104766	104613	114494	114551	108327
145.0	10.0	2.3	104210	107549	114495	114552	115109
150.0	10.0	2.3	100852	100401	114496	114553	108328
160.0	10.0	2.3	103943	102716	114497	114554	108329
170.0	10.0	2.3	100853	100402	114498	114555	108330
180.0	10.0	2.3	100854	100403	114499	114556	108331
185.0	10.0	2.3	105070	102774	114500	114557	108332
190.0	10.0	2.3	104399	104808	114501	114558	108333
200.0	10.0	2.3	105698	104243	114502	114559	115121
210.0	10.0	2.3	100855	100404	114503	114560	108334
220.0	10.0	2.3	104589	104566	114504	114561	108335
230.0	10.0	2.3	055511	100405	114505	114562	108337
235.0	10.0	2.3	103824	101718	114506	114563	108338
240.0	10.0	2.3	104043	101720	114507	114564	108339
250.0	10.0	2.3	100856	100406	114508	114565	115110
260.0	10.0	2.3	100857	100407	114509	114566	108340
265.0	10.0	2.3	104573	104326	114510	114567	115111
270.0	10.0	2.3	101673	102982	114511	114568	115112

\* EN For use in Tersa-cutterheads only  
 \* DE Nur zur Verwendung in Tersa-Messerköpfen  
 \* FR Utilisation limitée aux porte outils de Tersa  
 \* IT Da usare solo su teste portacoltelli della Tersa  
 \* ES Sólo para empleo con portacuchillas de Tersa

- EN System Planer knives
- DE Systemhobelmesser
- FR Couteaux à raboter pour système
- IT Coltelli da pialla per sistema
- ES Cuchillas para cepillar para sistema



For System Tersa\*

L mm	W mm	T mm	T10MG	HSS Standard (M2)	HSS 18% (T1)	HSS M42	High Performance Steel
280.0	10.0	2.3	100858	100408	114512	114569	115113
300.0	10.0	2.3	100859	100409	114513	114570	108341
310.0	10.0	2.3	055512	100410	114514	114571	108342
320.0	10.0	2.3	107550	104687	114515	114572	108343
330.0	10.0	2.3	100861	100411	114516	114573	108344
350.0	10.0	2.3	100862	100412	114517	114574	108345
360.0	10.0	2.3	100863	100413	114518	114575	115114
400.0	10.0	2.3	100864	100414	114519	114576	108346
410.0	10.0	2.3	055513	100415	114520	114577	108347
415.0	10.0	2.3	107551	105267	114521	114578	115115
420.0	10.0	2.3	100865	100416	114522	114579	108348
430.0	10.0	2.3	055514	100417	114523	114580	108349
450.0	10.0	2.3	100866	100418	114524	114581	108350
500.0	10.0	2.3	100867	100419	114525	114582	108351
510.0	10.0	2.3	055515	100420	114526	114583	108352
520.0	10.0	2.3	055516	100421	114527	114584	108353
530.0	10.0	2.3	100868	100422	114528	114585	108354
540.0	10.0	2.3	100869	100423	114529	114586	115116
600.0	10.0	2.3	104720	103994	114530	114587	108355
610.0	10.0	2.3	055517	100424	114531	114588	108356
630.0	10.0	2.3	055518	100425	114532	114589	108357
635.0	10.0	2.3	102179	103912	114533	114590	108358
640.0	10.0	2.3	100870	100426	114534	114591	108359
650.0	10.0	2.3	055519	100427	114535	114592	108361
710.0	10.0	2.3		114119	114536	114593	115117
810.0	10.0	2.3		113435	114537	114594	115118
1050.0	10.0	2.3		114599	114538	114595	115119
Coil 60 meters				115127	116526	115128	115129
Coil 120 meters				110719	115191	114791	115120
Packing paper coil (60 meters for paired packing)				112874	112874	112874	112874

\* EN For use in Tersa-cutterheads only

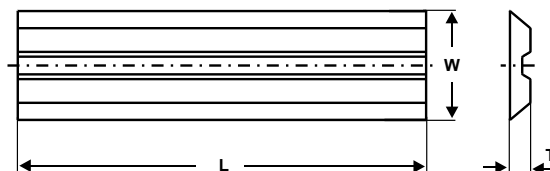
\* DE Nur zur Verwendung in Tersa-Messerköpfen

\* FR Utilisation limitée aux porte outils de Tersa

\* IT Da usare solo su teste portacoltelli della Tersa

\* ES Sólo para empleo con portacuchillas de Tersa

- EN System Planer knives
- DE Systemhobelmesser
- FR Couteaux à raboter pour système
- IT Coltelli da pialla per sistema
- ES Cuchillas para cepillar para sistema



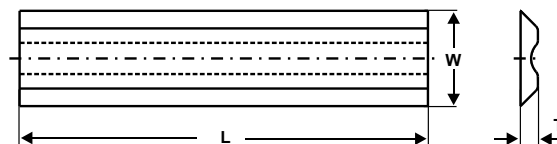
For System Centrolock\*

L mm	W mm	T mm	T10MG	T12SMG Microfinish	HSS 18% (T1)
10.0	16.0	3.0	102953		114697
20.0	16.0	3.0	100836		114698
30.0	16.0	3.0	102777		114699
40.0	16.0	3.0	102954		114700
50.0	16.0	3.0	102778		114701
60.0	16.0	3.0	100837	141935	114702
65.0	16.0	3.0	107536		114703
80.0	16.0	3.0	100838		114704
100.0	16.0	3.0	055502	141937	114705
115.0	16.0	3.0	106848		114706
130.0	16.0	3.0	055503	142745	114707
140.0	16.0	3.0	107537		114708
150.0	16.0	3.0	100839	142840	114709
160.0	16.0	3.0	105003		114710
170.0	16.0	3.0	055504	142746	114711
180.0	16.0	3.0	100840		114712
190.0	16.0	3.0	100841		114713
210.0	16.0	3.0	100842		114714
220.0	16.0	3.0	107538		114715
230.0	16.0	3.0	054753	141939	114716
235.0	16.0	3.0	100844		114717
240.0	16.0	3.0	055505	140154	114718
260.0	16.0	3.0	100845		114719
270.0	16.0	3.0	055506	141941	114720
285.0	16.0	3.0	125900		122896
300.0	16.0	3.0	102493		114721
310.0	16.0	3.0	100846	142850	114722
460.0	16.0	3.0	055507		114723
650.0	16.0	3.0	055508		114724
710.0	16.0	3.0			114725
810.0	16.0	3.0			114726
1050.0	16.0	3.0			114727

\* EN For use in Centrolock-cutterheads only  
 \* DE Nur zur Verwendung in Centrolock-Messerköpfen  
 \* FR Utilisation limitée aux porte outils de Centrolock  
 \* IT Da usare solo su teste portacoltelli della Centrolock  
 \* ES Sólo para empleo con portacuchillas de Centrolock



- EN System Planer knives
- DE Systemhobelmesser
- FR Couteaux à raboter pour système
- IT Coltelli da pialla per sistema
- ES Cuchillas para cepillar para sistema



For System Terminus\*

L mm	W mm	T mm	T10MG	HSS 18% (T1)
50.0	14.0	2.55	100796	114649
60.0	14.0	2.55	100803	114650
80.0	14.0	2.55	100804	114651
100.0	14.0	2.55	100805	114652
110.0	14.0	2.55	100806	114653
120.0	14.0	2.55	100807	114654
130.0	14.0	2.55	055496	114655
136.0	14.0	2.55	107532	114656
140.0	14.0	2.55	100808	114657
150.0	14.0	2.55	100809	114658
160.0	14.0	2.55	100811	114659
170.0	14.0	2.55	100812	114660
180.0	14.0	2.55	100813	114661
190.0	14.0	2.55	100814	114662
200.0	14.0	2.55	100815	114663
210.0	14.0	2.55	100816	114664
220.0	14.0	2.55	100817	114665
230.0	14.0	2.55	054752	114666
240.0	14.0	2.55	100818	114667
250.0	14.0	2.55	100819	114668
255.0	14.0	2.55	107533	114669
260.0	14.0	2.55	100820	114670
270.0	14.0	2.55	100821	114671
275.0	14.0	2.55	107534	114672
280.0	14.0	2.55	100822	114673

L mm	W mm	T mm	T10MG	HSS 18% (T1)
300.0	14.0	2.55	100823	114674
310.0	14.0	2.55	055497	114675
330.0	14.0	2.55	107535	114676
350.0	14.0	2.55	100824	114677
360.0	14.0	2.55	100825	114678
400.0	14.0	2.55	100826	114679
410.0	14.0	2.55	055498	114680
420.0	14.0	2.55	100828	114681
430.0	14.0	2.55	100829	114682
450.0	14.0	2.55	100830	114683
480.0	14.0	2.55	100940	114684
500.0	14.0	2.55	104977	114685
510.0	14.0	2.55	055499	114686
520.0	14.0	2.55	100831	114687
530.0	14.0	2.55	100832	114688
610.0	14.0	2.55	055500	114689
620.0	14.0	2.55	100833	114690
630.0	14.0	2.55	100834	114691
640.0	14.0	2.55	100835	114692
650.0	14.0	2.55	055501	114693
710.0	14.0	2.55		114694
810.0	14.0	2.55		114695
1050.0	14.0	2.55		114696

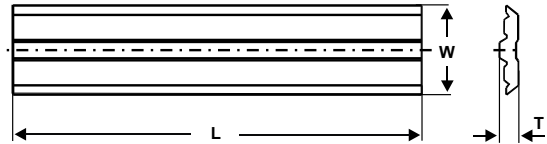
\* EN For use in Terminus-cutterheads only

\* DE Nur zur Verwendung in Terminus-Messerköpfen

\* FR Utilisation limitée aux porte outils de Terminus

\* IT Da usare solo su teste portacoltelli della Terminus

\* ES Sólo para empleo con portacuchillas de Terminus

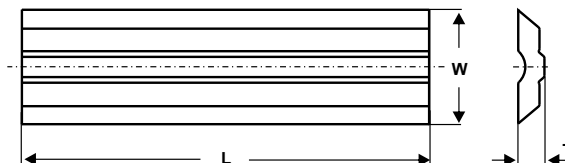


For System Centrofix/  
Centrostar/ Quickfix\*

- EN System Planer knives
- DE Systemhobelmesser
- FR Couteaux à raboter pour système
- IT Coltelli da pialla per sistema
- ES Cuchillas para cepillar para sistema

L mm	W mm	T mm	T10MG	HSS Standard (M2)	HSS 18% (T1)
50.0	12.0	2.7	100876	100896	114762
80.0	12.0	2.7	100879	100897	114763
100.0	12.0	2.7	100880	100898	114764
120.0	12.0	2.7	100881	100899	114765
130.0	12.0	2.7	055520	055488	114766
136.0	12.0	2.7	100883	100900	114767
150.0	12.0	2.7	100884	100901	114768
170.0	12.0	2.7	100885	100902	114769
180.0	12.0	2.7	055521	055489	114770
190.0	12.0	2.7	100886	100904	114771
210.0	12.0	2.7	100887	100905	114772
230.0	12.0	2.7	055522	055490	114773
240.0	12.0	2.7	100890	100906	114774
260.0	12.0	2.7	111091	110036	116026
310.0	12.0	2.7	101675	103165	114775
400.0	12.0	2.7	100891	100907	114776
410.0	12.0	2.7	055523	055491	114777
420.0	12.0	2.7	100892	100908	114778
430.0	12.0	2.7	100893	100909	114779
500.0	12.0	2.7	100894	100910	114780
510.0	12.0	2.7	055524	055492	114781
520.0	12.0	2.7	055525	055493	114782
530.0	12.0	2.7	055526	055494	114783
540.0	12.0	2.7	100895	100911	114784
630.0	12.0	2.7	107553	103814	114785
640.0	12.0	2.7	107554	107474	114786
650.0	12.0	2.7	055527	055495	114787
710.0	12.0	2.7		101046	114788
810.0	12.0	2.7		108226	114789
1050.0	12.0	2.7		114760	114790
<b>Coil 60 meters</b>				<b>121137</b>	
<b>Coil 120 meters</b>				<b>112205</b>	
<b>Packing paper coil (60 meters for paired packing)</b>				<b>112877</b>	

\* EN For use in Centrofix/Centrostar/Quickfix-cutterheads only  
 \* DE Nur zur Verwendung in Centrofix/Centrostar/Quickfix-Messerköpfen  
 \* FR Utilisation limitée aux porte outils de Centrofix/Centrostar/Quickfix  
 \* IT Da usare solo su teste portacoltelli della Centrofix/Centrostar/Quickfix  
 \* ES Sólo para empleo con portacuchillas de Centrofix/Centrostar/Quickfix



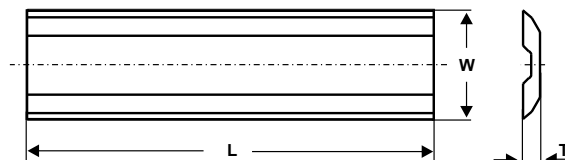
For System Variplan\*

- EN System Planer knives  
 DE Systemhobelmesser  
 FR Couteaux à raboter pour système  
 IT Coltelli da pialla per sistema  
 ES Cuchillas para cepillar para sistema

L mm	W mm	T mm	T10MG	HSS 18% (T1)
50	16.0	3.7	116764	116737
60	16.0	3.7	116765	116738
80	16.0	3.7	116766	116739
100	16.0	3.7	116767	116740
120	16.0	3.7	116768	116741
130	16.0	3.7	109662	116319
136	16.0	3.7	116769	116742
150	16.0	3.7	116770	116743
170	16.0	3.7	108654	116744
180	16.0	3.7	116771	116745
190	16.0	3.7	116772	116746
210	16.0	3.7	107585	116747
230	16.0	3.7	116773	116320
240	16.0	3.7	116774	116321
400	16.0	3.7	116775	116748
410	16.0	3.7	107586	116322
420	16.0	3.7	116776	116749
430	16.0	3.7	116777	116750
500	16.0	3.7	116778	116751
510	16.0	3.7	116779	116752
520	16.0	3.7	116780	116753
530	16.0	3.7	116781	116754
540	16.0	3.7	116782	116755
600	16.0	3.7	116783	116756
610	16.0	3.7	116784	116757
630	16.0	3.7	116785	116758
640	16.0	3.7	116786	116759
1050	16.0	3.7		115845

\* EN For use in Variplan-cutterheads only  
 \* DE Nur zur Verwendung in Variplan-Messerköpfen  
 \* FR Utilisation limitée aux porte outils de Variplan  
 \* IT Da usare solo su teste portacoltelli della Variplan  
 \* ES Sólo para empleo con portacuchillas de Variplan

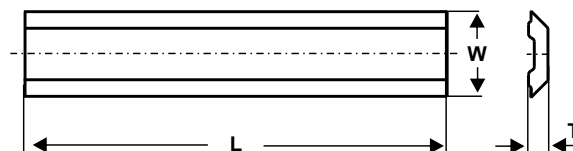
- EN System Planer knives  
 DE Systemhobelmesser  
 FR Couteaux à raboter pour système  
 IT Coltelli da pialla per sistema  
 ES Cuchillas para cepillar para sistema



For System Sinus\*

L mm	W mm	T mm	T10MG	HSS 18% (T1)
80	16.0	2.5	116711	130320
100	16.0	2.5	116712	130321
120	16.0	2.5	116713	130322
130	16.0	2.5	116714	130323
140	16.0	2.5	116715	130324
150	16.0	2.5	116716	130325
160	16.0	2.5	116717	130326
180	16.0	2.5	116718	130327
190	16.0	2.5	116719	130328
200	16.0	2.5	116720	130329
210	16.0	2.5	116721	130330
220	16.0	2.5	116722	128352
230	16.0	2.5	116723	128353
235	16.0	2.5		130344
240	16.0	2.5	116724	128354
250	16.0	2.5	116725	130331
260	16.0	2.5	116726	130332
300	16.0	2.5	116727	130333
310	16.0	2.5	116728	130334
400	16.0	2.5	116729	130335
410	16.0	2.5	116730	130336
430	16.0	2.5	116731	130337
500	16.0	2.5	116732	130338
510	16.0	2.5	116733	130339
610	16.0	2.5	116734	130292
630	16.0	2.5	116735	130340
640	16.0	2.5	116736	130341
710	16.0	2.5		130342
1050	16.0	2.5		130343
1350	16.0	2.5		115486

\* EN For use in Sinus-cutterheads only  
 \* DE Nur zur Verwendung in Sinus-Messerköpfen  
 \* FR Utilisation limitée aux porte outils de Sinus  
 \* IT Da usare solo su teste portacoltelli della Sinus  
 \* ES Sólo para empleo con portacuchillas de Sinus



For System Enshin\*

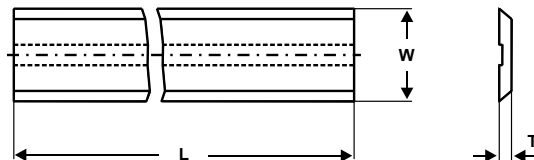
- EN System Planer knives
- DE Systemhobelmesser
- FR Couteaux à raboter pour système
- IT Coltelli da pialla per sistema
- ES Cuchillas para cepillar para sistema

L mm	W mm	T mm	T10MG
80	12.7	2.7	116794
100	12.7	2.7	116796
130	12.7	2.7	116797
150	12.7	2.7	116798
170	12.7	2.7	116799
180	12.7	2.7	116800
190	12.7	2.7	116801
210	12.7	2.7	116802
230	12.7	2.7	116803
240	12.7	2.7	116804
640	12.7	2.7	116805

L mm	W mm	T mm	HSS Standard (M2)
80	12.0	2.7	116787
100	12.0	2.7	116788
130	12.0	2.7	116316
150	12.0	2.7	116789
170	12.0	2.7	116790
180	12.0	2.7	116317
190	12.0	2.7	116791
210	12.0	2.7	116792
230	12.0	2.7	116318
240	12.0	2.7	116793
1050	12.0	2.7	115846

\* EN For use in Enshin-cutterheads only  
 \* DE Nur zur Verwendung in Enshin-Messerköpfen  
 \* FR Utilisation limitée aux porte outils de Enshin  
 \* IT Da usare solo su teste portacoltelli della Enshin  
 \* ES Sólo para empleo con portacuchillas de Enshin

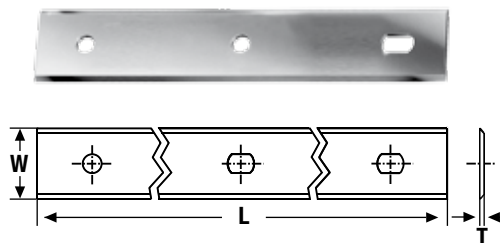
- EN System Planer knives  
 DE Systemhobelmesser  
 FR Couteaux à raboter pour système  
 IT Coltelli da pialla per sistema  
 ES Cuchillas para cepillar para sistema



For System Bulldozer

L mm	W mm	T mm	T10MG
60.0	13.6	1.8	047422
70.0	13.6	1.8	013728
80.0	13.6	1.8	046288
100.0	13.6	1.8	013713
110.0	13.6	1.8	047423
120.0	13.6	1.8	013715
130.0	13.6	1.8	013716
140.0	13.6	1.8	013723
150.0	13.6	1.8	013718
160.0	13.6	1.8	013726
180.0	13.6	1.8	013719
190.0	13.6	1.8	013725
200.0	13.6	1.8	013720
220.0	13.6	1.8	049247
230.0	13.6	1.8	013721
240.0	13.6	1.8	040337
245.0	13.6	1.8	038423
250.0	13.6	1.8	013722
260.0	13.6	1.8	035440

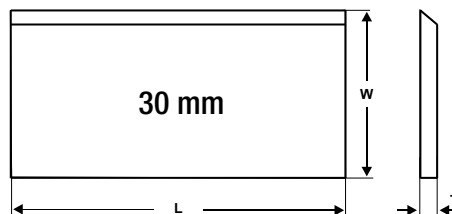
- EN System Planer knives
- DE Systemhobelmesser
- FR Couteaux à raboter pour système
- IT Coltelli da pialla per sistema
- ES Cuchillas para cepillar para sistema




System Barke/Brück/ESTA

L	W	T	High Performance Steel	M42	Suitable for ...	L	W	T	Backing plate
mm	mm	mm				mm	mm	mm	
110.0	19.0	1.0	101798	142053	Mafell	110.0	25.0	2.0	142369
115.0	18.6	1.0	142069	142104		120.0	25.0	2.0	142370
120.0	19.0	1.0	051731	142106		130.0	25.0	2.0	142371
130.0	19.0	1.0	049685	142107		150.0	25.0	2.0	142372
150.0	19.0	1.0	131397	142108					
161.0	19.0	1.0	142074	142109	Mafell				
170.0	18.6	1.0	142362	142363	Mafell				
170.0	19.0	1.0	110648	142110		170.0	25.0	2.0	142373
180.0	19.0	1.0	109998	142111		180.0	25.0	2.0	142374
186.0	19.0	1.0	142070	142112		186.0	25.0	2.0	142375
190.0	19.0	1.0	051730	142113	HolzHer / ProTool / Festool	190.0	25.0	2.0	142376
200.0	19.0	1.0	130305	142115		200.0	25.0	2.0	142377
205.0	19.0	1.0	142075	142116		230.0	25.0	2.0	142378
230.0	19.0	1.0	050210	142127					
245.0	19.0	1.0	142072	142128					
250.0	19.0	1.0	142073	142129		250.0	25.0	2.0	142379
260.0	17.2	1.0	142365	-	Scheppach	260.0	16.6	2.0	142380
260.0	19.0	1.0	127955	142133	<u>Not</u> for Felder	260.0	25.0	2.0	142381
264.0	24.0	1.0	142092	-	Emco	264.0	20.0	2.0	142382
280.0	18.6	1.0	142099	142153	Mafell				
300.0	19.0	1.0	142100	142154	HolzHer / ProTool / Makita				
310.0	19.0	1.0	130306	142155	<u>Not</u> for Felder/Hammer	310.0	25.0	2.0	142383
320.0	17.2	1.0	142366	-	Scheppach	320.0	16.6	2.0	142384
320.0	18.6	1.0	142367	142368	Mafell				
320.0	19.0	1.0	101799	142156		320.0	25.0	2.0	142385
350.0	19.0	1.0	134298	142157	HolzHer / ProTool				
400.0	19.0	1.0	133960	142158		400.0	25.0	2.0	142386
410.0	19.0	1.0	113338	142159	<u>Not</u> for Felder/Hammer	410.0	25.0	2.0	142387
500.0	19.0	1.0	110742	142160		500.0	25.0	2.0	142388
510.0	19.0	1.0	109381	142161	<u>Not</u> for Felder	510.0	25.0	2.0	142389
520.0	19.0	1.0	142101	142162		520.0	25.0	2.0	142390
530.0	19.0	1.0	133883	142163		530.0	25.0	2.0	142391
610.0	19.0	1.0	142102	142164		610.0	25.0	2.0	142392
630.0	19.0	1.0	108937	142165		630.0	25.0	2.0	142393
640.0	19.0	1.0	132415	142166		640.0	25.0	2.0	142394

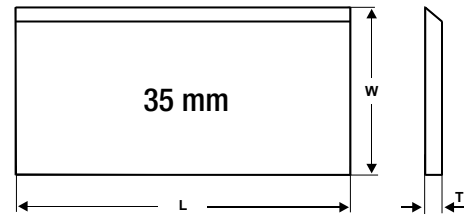
EN The backing plates are also available in W = 18 mm.  
 DE Stützplatten sind auch in W = 18 mm lieferbar.  
 FR Les porte-plaquettes sont également disponibles en W = 18 mm.  
 IT Le piastre di supporto sono anche disponibili in W = 18 mm.  
 ES Las placas de soporte también están disponibles en W = 18 mm.




- EN HSS/Matrix planer knives
- DE HSS/Matrix Hobelmesser
- FR Fers de raboteuse HSS/Matrix
- IT Coltelli da pialla HSS/Matrix
- ES Cuchillas en HSS/Matrix

L	W	T	HSS	HSS	 Matrix coating technology
mm	mm	mm	Standard (M2)	18% (T1)	
60	30.0	3.0	030152	111908	120140
80	30.0	3.0	030153	111913	120141
100	30.0	3.0	030154	111914	120142
110	30.0	3.0	030156	111915	120143
120	30.0	3.0	030157	111916	120144
130	30.0	3.0	030159	111917	120145
150	30.0	3.0	030162	111918	120146
160	30.0	3.0	030163	111919	120147
170	30.0	3.0	030164	111920	120148
180	30.0	3.0	030165	111921	120149
210	30.0	3.0	030168	111922	120150
230	30.0	3.0	030171	111923	120151
240	30.0	3.0	030172	111924	120153
260	30.0	3.0	030174	111925	120154
300	30.0	3.0	030175	111926	120155
310	30.0	3.0	030176	111927	120156
350	30.0	3.0	030178	111928	120157
400	30.0	3.0	030182	111929	120158
410	30.0	3.0	030183	111930	120159
500	30.0	3.0	030186	111931	120160
510	30.0	3.0	030187	111932	120161
520	30.0	3.0	101376	111933	120162
530	30.0	3.0	030188	111934	120163
600	30.0	3.0	030190	111935	120164
610	30.0	3.0	030191	111936	120165
630	30.0	3.0	030192	111937	120166
640	30.0	3.0	030194	111938	120167
710	30.0	3.0	030198	111939	120168
810	30.0	3.0	030201	111940	120169
820	30.0	3.0	101051	111941	120170
1050	30.0	3.0	030249	111942	120171

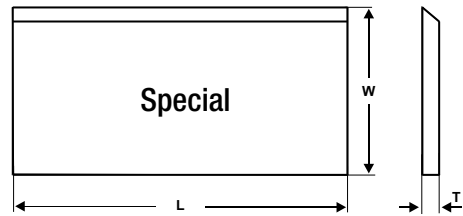





- EN HSS/Matrix planer knives
- DE HSS/Matrix Hobelmesser
- FR Fers de raboteuse HSS/Matrix
- IT Coltelli da pialla HSS/Matrix
- ES Cuchillas en HSS/Matrix

L	W	T	HSS		 Matrix coating technology
			Standard (M2)	18% (T1)	
mm	mm	mm			
60	35.0	3.0	030205	111944	120173
80	35.0	3.0	030206	111945	120174
100	35.0	3.0	030207	111946	120175
110	35.0	3.0	030208	111947	120176
120	35.0	3.0	030209	111948	120178
130	35.0	3.0	030210	111949	120179
150	35.0	3.0	030211	111950	120180
160	35.0	3.0	030212	111951	120181
170	35.0	3.0	030213	111952	120182
180	35.0	3.0	030214	111953	120183
210	35.0	3.0	030217	111954	120185
230	35.0	3.0	030218	111955	120186
240	35.0	3.0	107570	111956	120188
260	35.0	3.0	030220	111957	120189
300	35.0	3.0	048006	111958	120190
310	35.0	3.0	030222	111959	120191
350	35.0	3.0	107571	111960	120192
400	35.0	3.0	030225	111961	120193
410	35.0	3.0	030226	111962	120194
500	35.0	3.0	030230	111963	120195
510	35.0	3.0	030231	111964	120196
520	35.0	3.0	030232	111965	120197
530	35.0	3.0	030233	111966	120198
600	35.0	3.0	030234	111967	120199
610	35.0	3.0	030235	111968	120200
630	35.0	3.0	030236	111969	120201
640	35.0	3.0	030237	111970	120202
710	35.0	3.0	030240	111971	120203
810	35.0	3.0	030243	111972	120204
820	35.0	3.0	101052	111973	120207
1050	35.0	3.0	030252	111974	120208

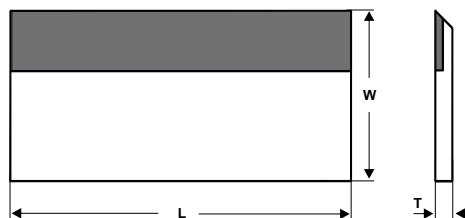
- EN HSS/Matrix planer knives
- DE HSS/Matrix Hobelmesser
- FR Fers de raboteuse HSS/Matrix
- IT Coltelli da pialla HSS/Matrix
- ES Cuchillas en HSS/Matrix



EN Special dimensions  
 DE Spezialmaße  
 FR Dimensions spéciales  
 IT Dimensioni speciali  
 ES Dimensiones especiales

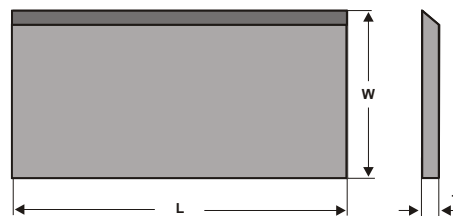
L	W	T	HSS	HSS	 Matrix coating technology
mm	mm	mm	Standard (M2)	18% (T1)	
1050	20.0	2.5	106992	122065	122071
1050	25.0	2.5	106994	116185	122072
1050	20.0	3.0	101943	122007	-
1050	25.0	3.0	101030	111975	120209
1050	32.0	3.0	101938	111976	120210

- EN T.C.T. planer knives
- DE HM-bestückte Hobelmesser
- FR Couteaux à mise rapportée carbure
- IT Coltelli da pialla con metallo duro riportato
- ES Cuchillas con metal duro



EN metric  
DE metrisch  
FR métrique  
IT metrico  
ES métrico

L	T	W = 25 mm	W = 30 mm	W = 35 mm
mm	mm			
60.0	3.0	114850	029969	030021
80.0	3.0	114851	029970	030022
100.0	3.0	113770	029972	030024
110.0	3.0	114852	029973	030025
120.0	3.0	111723	029974	030026
130.0	3.0	103946	029975	030027
150.0	3.0	105829	029979	030029
160.0	3.0	029943	029980	030030
170.0	3.0	114853	029981	030031
180.0	3.0	105830	029982	030032
200.0	3.0	110737	029986	030034
210.0	3.0	108651	029987	030035
230.0	3.0	112774	029989	030036
240.0	3.0	114854	029991	030038
250.0	3.0	029952	029993	030039
260.0	3.0	104917	029994	030040
270.0	3.0	107022	101697	107555
300.0	3.0	112585	029996	030041
310.0	3.0	029955	029997	030042
330.0	3.0	114855	002238	055837
350.0	3.0	114856	029998	030044
400.0	3.0	029957	029999	107556
410.0	3.0	104919	030001	030047
500.0	3.0	029960	030006	030049
510.0	3.0	104920	030007	030050
520.0	3.0	109690	030009	103998
530.0	3.0	114857	051130	030051
600.0	3.0	112963	030011	030052
610.0	3.0	114858	030012	030054
630.0	3.0	114859	030013	030055
640.0	3.0	114860	030014	030057
680.0	3.0	114861	114849	106194
710.0	3.0	114862	030016	030058
810.0	3.0	029967	030018	030059
820.0	3.0	107126	100445	100446
1010.0	3.0	030128	030131	030137
1050.0	3.0	104830	030132	030138



- EN Solid carbide planer knives
- DE Vollhartmetall Hobelmesser
- FR Couteaux à raboter au carbure massif
- IT Coltelli da pialla in HM integrale
- ES Cuchillas metal duro integral

L mm	W mm	T mm	T10MG
60.0	30.0	3.0	050050
80.0	30.0	3.0	050051
100.0	30.0	3.0	042029
110.0	30.0	3.0	050053
120.0	30.0	3.0	050055
130.0	30.0	3.0	044900
150.0	30.0	3.0	042030
160.0	30.0	3.0	105941
180.0	30.0	3.0	050057
190.0	30.0	3.0	112087
210.0	30.0	3.0	050059
230.0	30.0	3.0	049223
240.0	30.0	3.0	106296
250.0	30.0	3.0	109344
260.0	30.0	3.0	049222
310.0	30.0	3.0	050061
60.0	35.0	3.0	047867
80.0	35.0	3.0	047868
100.0	35.0	3.0	047869
110.0	35.0	3.0	050065
120.0	35.0	3.0	050067
130.0	35.0	3.0	047870
150.0	35.0	3.0	050070
160.0	35.0	3.0	105954
180.0	35.0	3.0	050072
190.0	35.0	3.0	114848
210.0	35.0	3.0	050074
230.0	35.0	3.0	049669
240.0	35.0	3.0	114846
250.0	35.0	3.0	114847
260.0	35.0	3.0	050077
310.0	35.0	3.0	050079

EN Only for use in special clamping systems for carbide knives, not in conventional planing heads!  
 DE Nur in Spezialklemmsystemen für Vollhartmetallhobelmesser einsetzen, nicht in herkömmlichen Hobelköpfen!  
 FR Seulement pour utilisation dans des systèmes de serrage spéciaux pour les couteaux en carbure, pas dans les têtes de rabotage conventionnelles!  
 IT Solo per l'impiego in sistemi di serraggio speciali per coltelli in metallo duro, non nella testa di piallatura convenzionali!  
 ES Sólo para uso en sistemas especiales de sujeción para cuchillas de carburo, no en cabezales de cepillado convencionales.